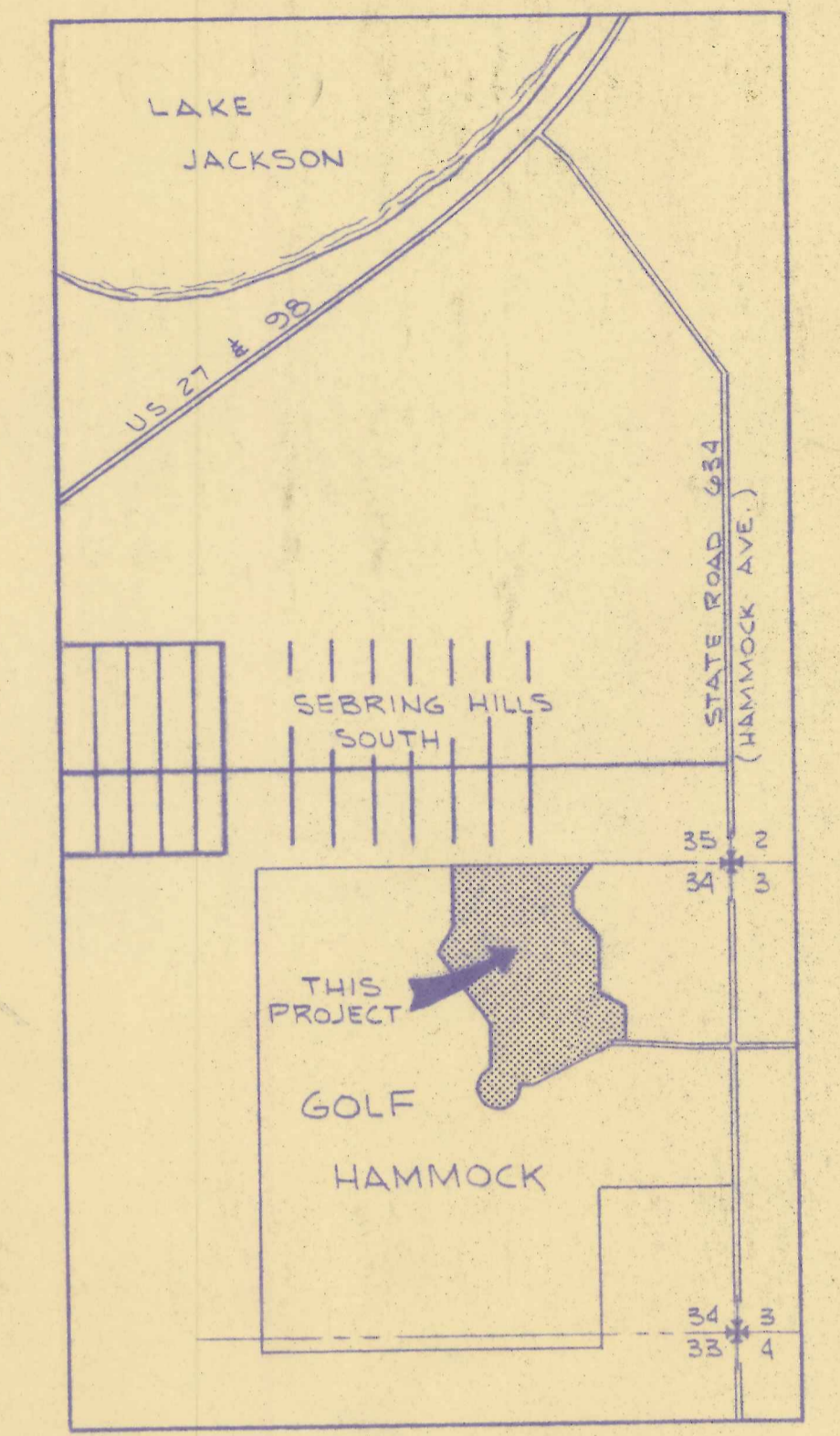


**GOLF HAMMOCK
UNIT TWO**
AMERICAN HOME SERVICE CORPORATION
HIGHLANDS COUNTY, FLORIDA



INDEX OF SHEETS

SHEET NO.	DESCRIPTION
PD-1	STREET & STORM WATER DRAINAGE PLAN
PD-2	STREET & STORM WATER DRAINAGE PLAN
PD-3	STREET & STORM WATER DRAINAGE PLAN
PD-4	STREET PROFILES

NOTES: (1) BACKYARD EASEMENTS TO BE 20'
(2) ADD ROAD SIGN DETAILS AND SIGN LOCATIONS

LEGEND

	EXISTING PAVEMENT
	PROPOSED PAVEMENT
	DIRECTION OF OVERLAND FLOW
	BENCH MARK (B.M.)

*APPROVED AS NOTED
12-27-77 [Signature]
"FIELD COPY"*

RECEIVED

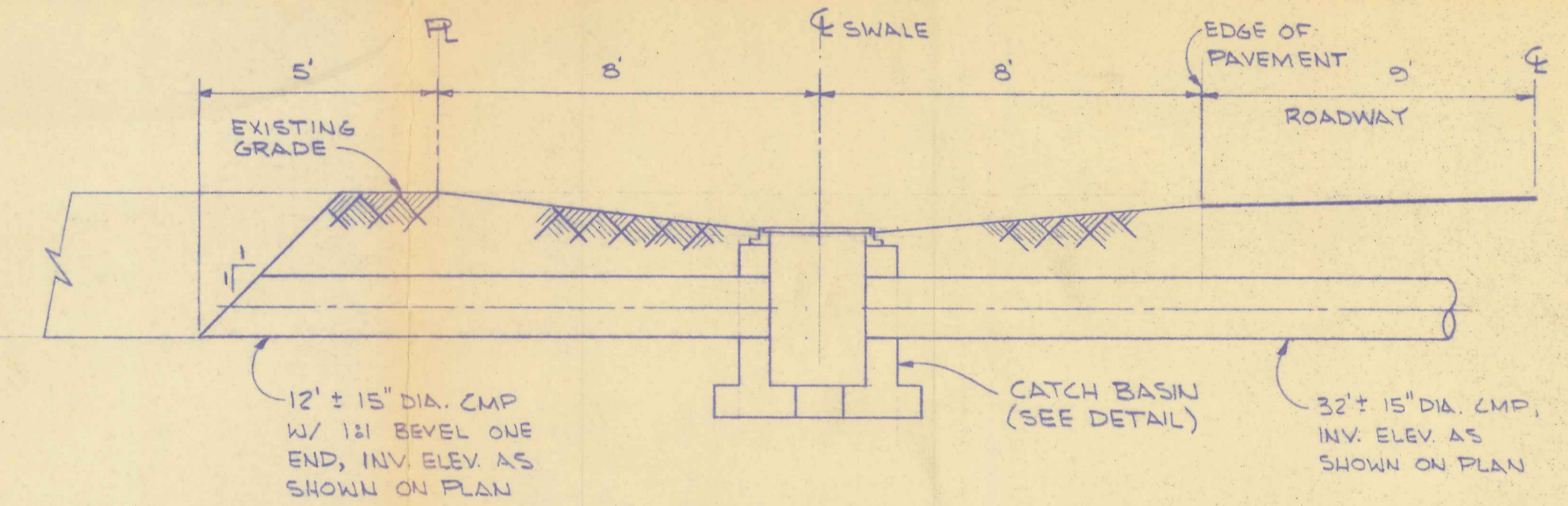
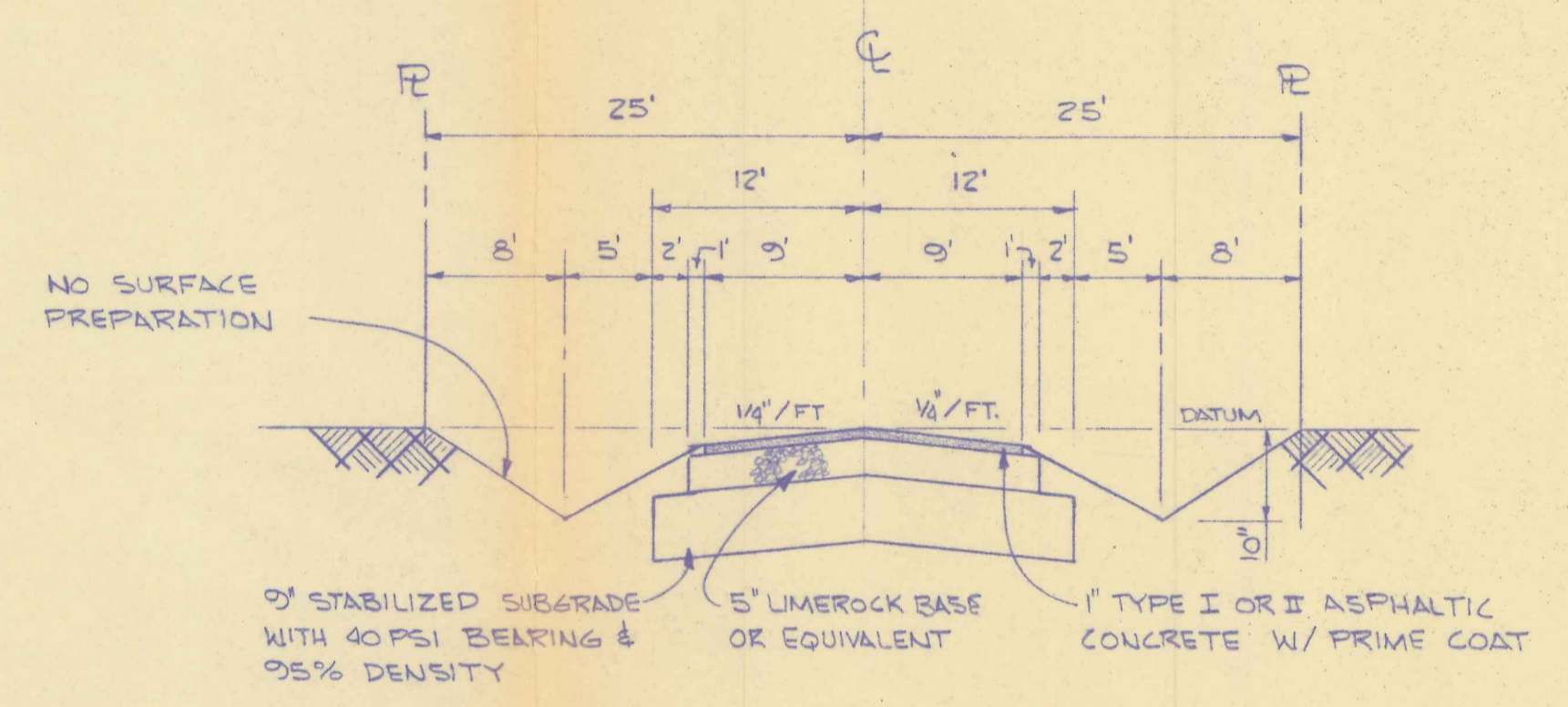
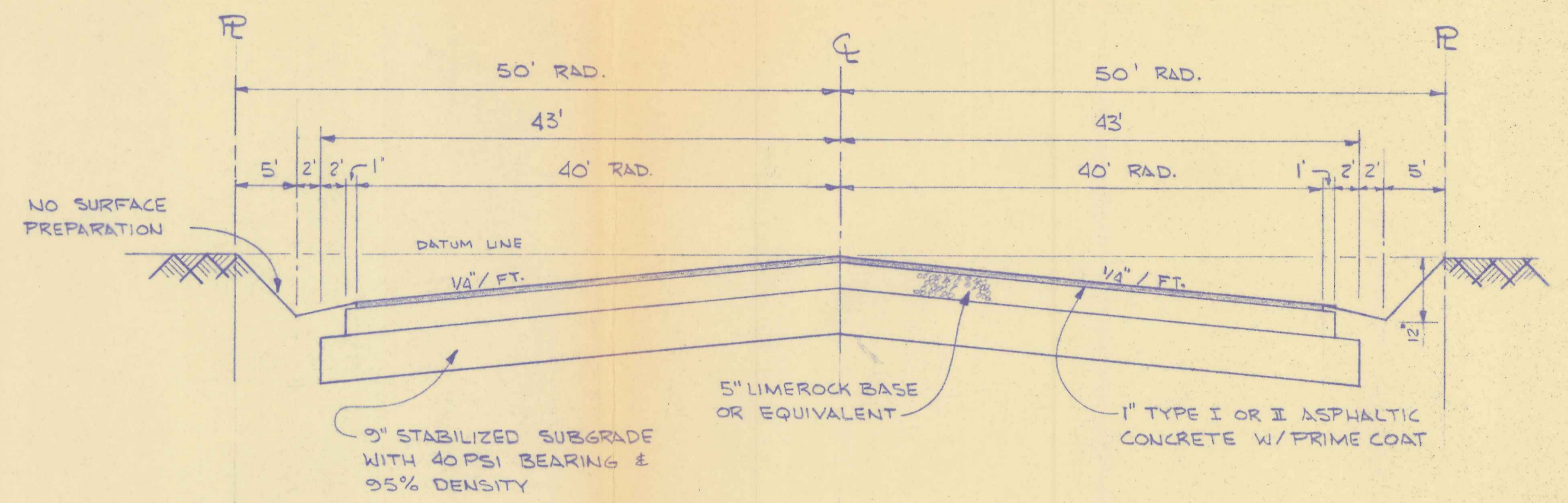
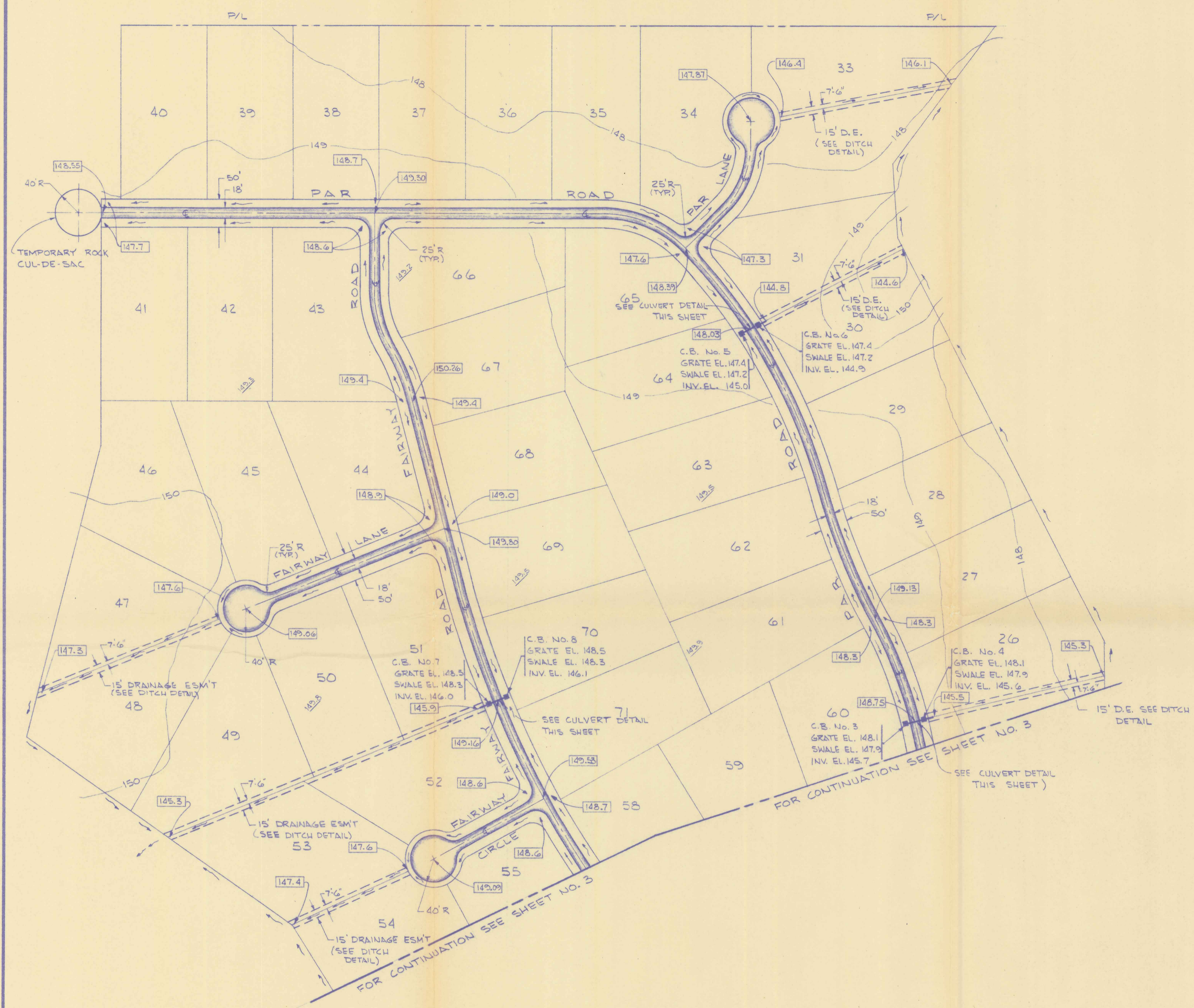
DEC 22 1977
BOARD OF COUNTY COMMISSIONERS
COUNTY ENGINEER
HIGHLANDS COUNTY, FLORIDA

STREET & STORM WATER DRAINAGE PLAN		DES. RHM	DWN. WKM
GOLF HAMMOCK UNIT 2		APP. RHM	
HIGHLANDS COUNTY, FLORIDA		DATE DEC. 16, 1977	
FOR: AMERICAN HOME SERVICE CORP.		PROJECT NO. 077.2-77	
		DRAWING NO. PD-1	
		SHEET 1 OF 4	

ROBERT H. MILLER & ASSOCIATES
CONSULTING CIVIL ENGINEERS
4431 S.W. 84th AVE., FT. LAUDERDALE, FLA. 33314
APPROVED: [Signature]
FLA. REGISTRATION NO. 10405

REVISIONS

NO.	DATE	DESCRIPTION	DES.	DWN.



PAVING AND DRAINAGE PLAN

SCALE: 1" = 100'

NORTH

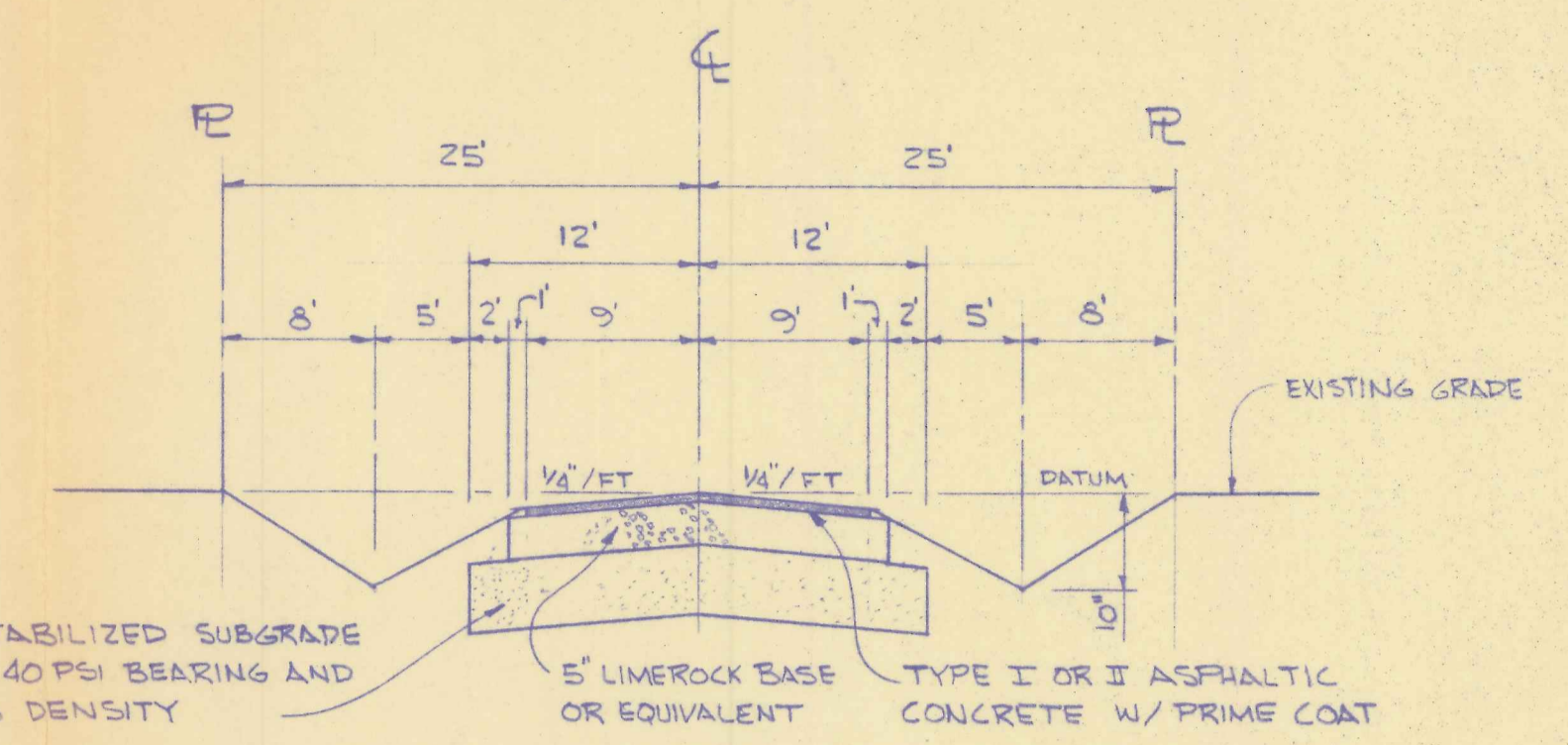
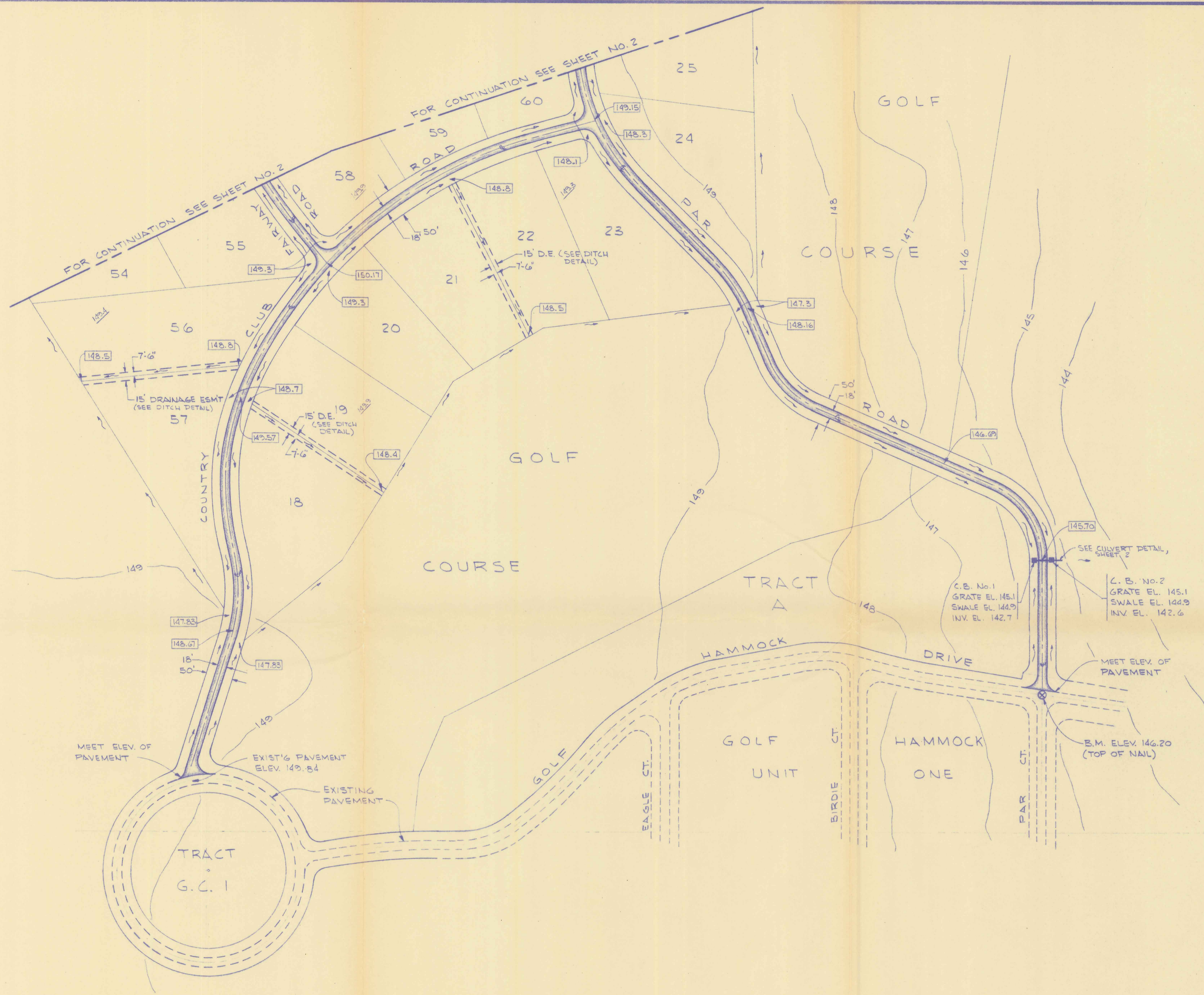
- LEGEND**
- 149 — EXISTING ELEVATION, N.G.V. DATUM
 - 149.00 — PROPOSED ELEVATION, N.G.V. DATUM
 - PROPOSED PAVEMENT
 - DIRECTION OF OVERLAND FLOW
 - CATCH BASIN (C.B.) AND PIPE
 - DRAINAGE EASEMENT (D.E.)

NO.	DATE	DESCRIPTION	DES.	DWN.

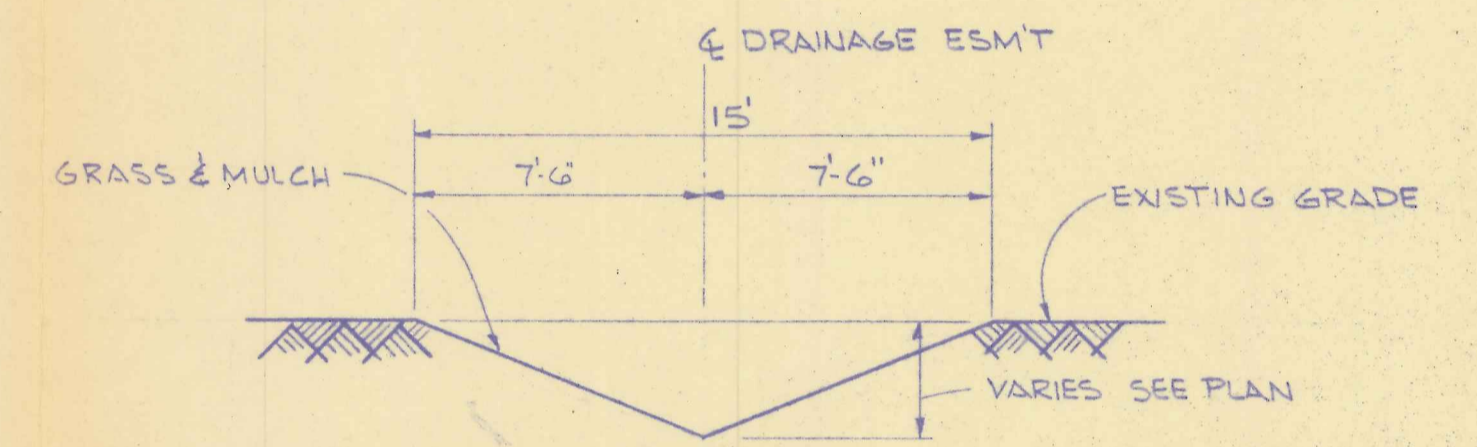
STREET & STORM WATER DRAINAGE PLAN
GOLF HAMMOCK UNIT 2
 HIGHLANDS COUNTY, FLORIDA
 FOR: AMERICAN HOME SERVICE CORP.

DES. DWN. RHM/WKM
 APP. RHM
 DATE Dec. 16, 1977
 PROJECT NO. 0772-77
 DRAWING NO. PD-2
 SH. 2 OF 4

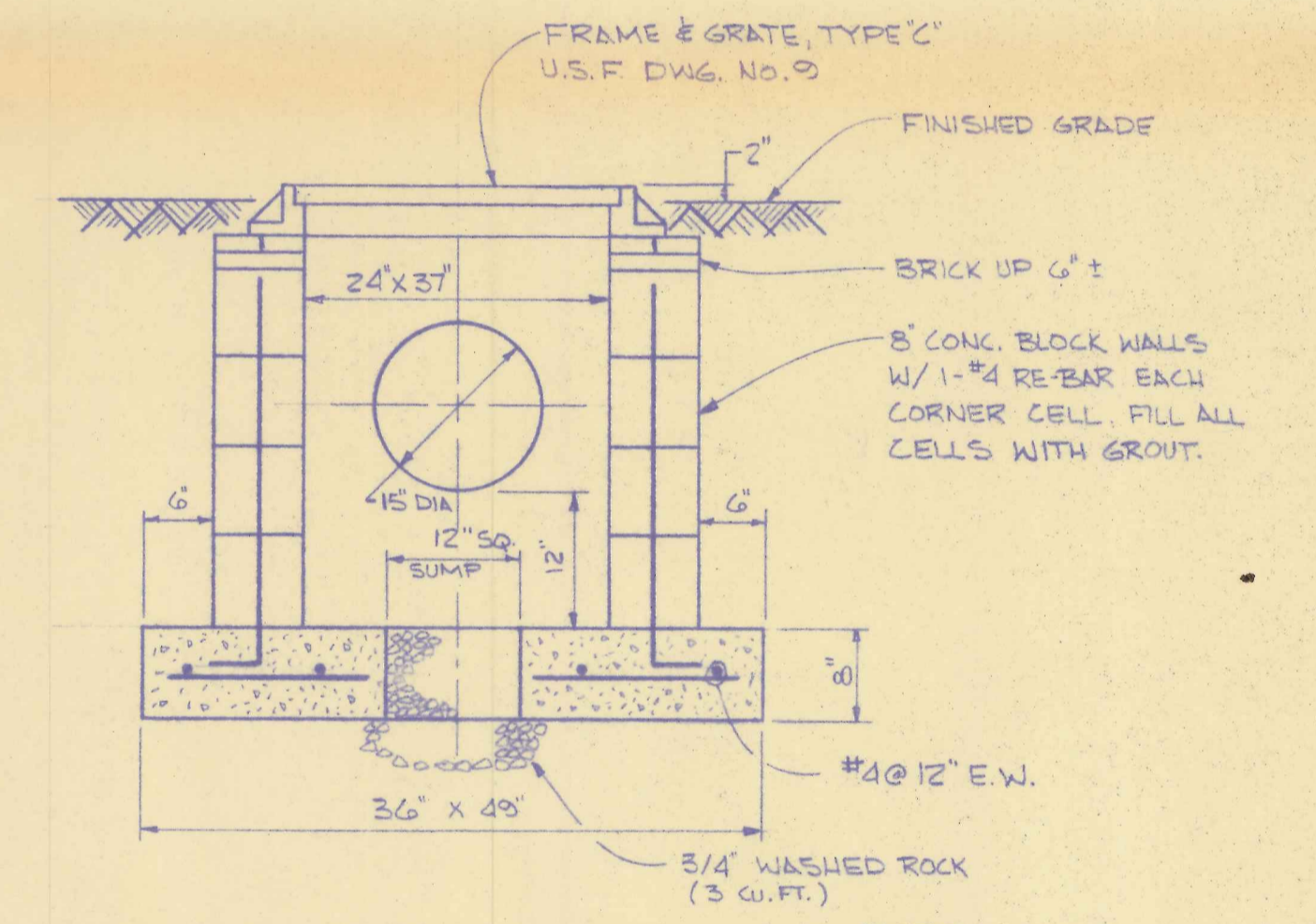
ROBERT H. MILLER & ASSOCIATES
 CONSULTING CIVIL ENGINEERS
 4431 S.W. 8th AVE., FT. LAUDERDALE, FLA. 33314
 APPROVED: *Robert H. Miller*
 FLA. REGISTRATION NO. 10408



PAVEMENT CROSS SECTION
N.T.S.

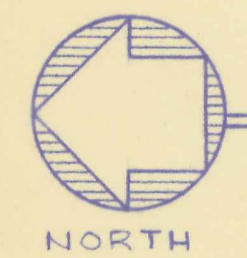


DRAINAGE DITCH
N.T.S.



CATCH BASIN
N.T.S.

NOTE:
PRE-CAST CATCH BASIN
MAY BE SUBSTITUTED
UPON APPROVAL OF THE
ENGINEER.



PAVING AND DRAINAGE PLAN

SCALE: 1" = 100'

LEGEND

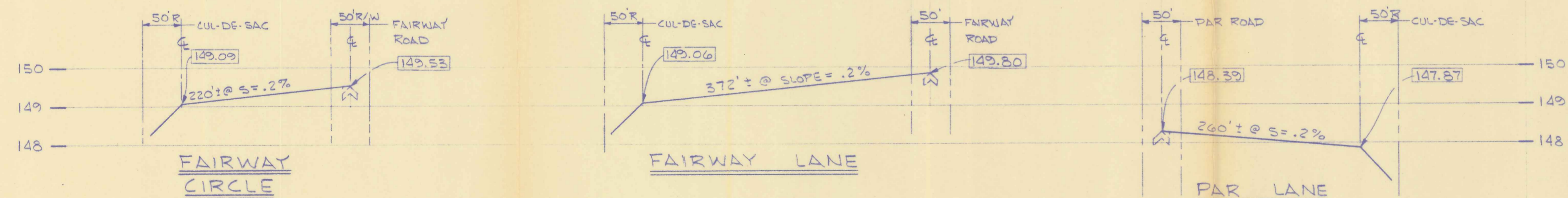
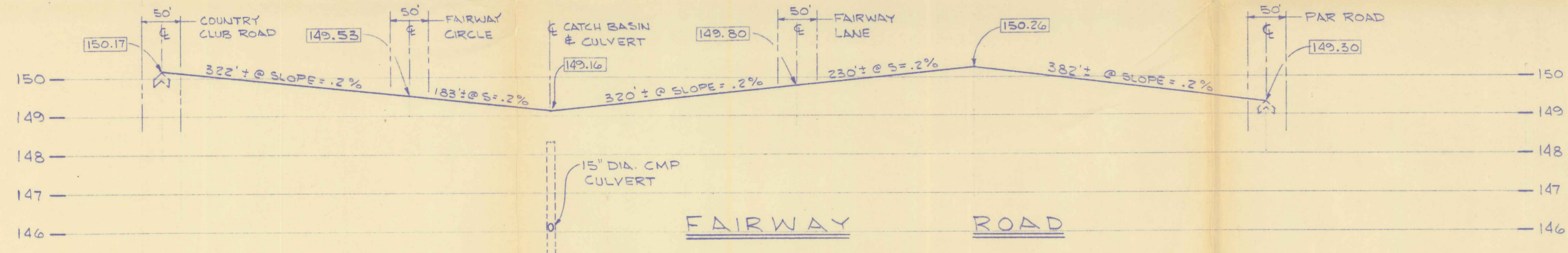
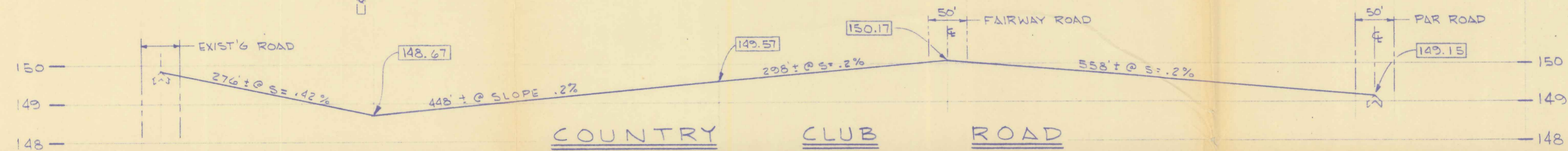
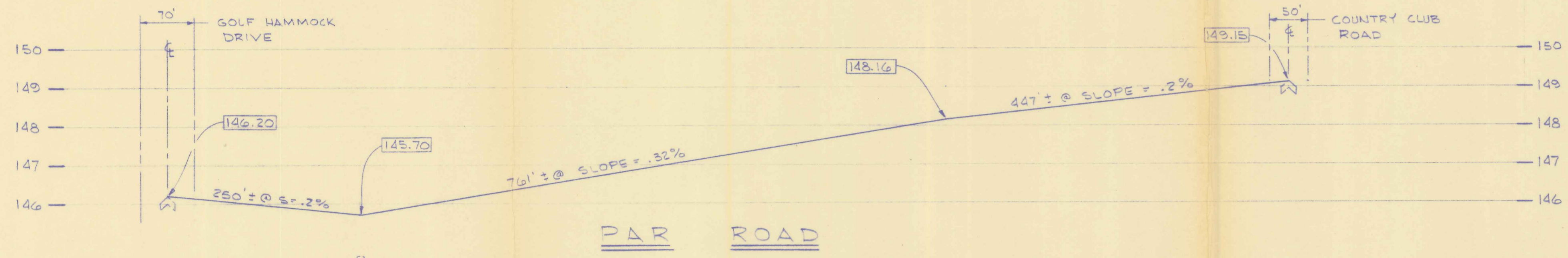
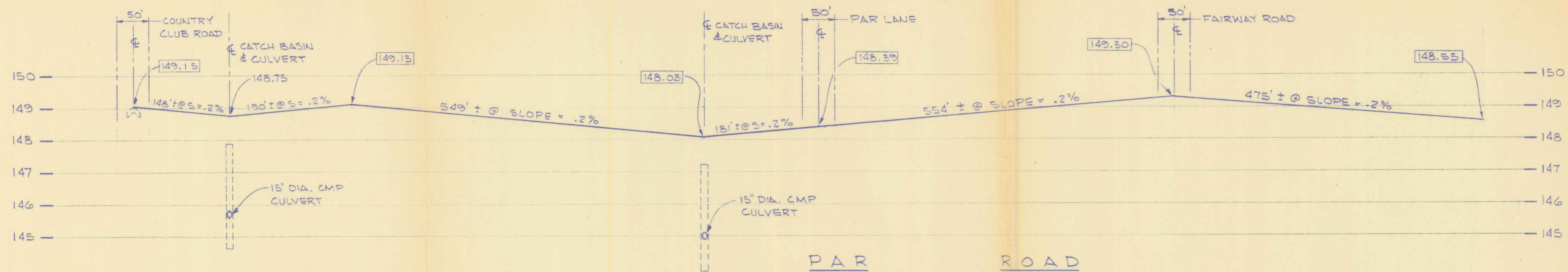
- EXISTING ELEVATION, N.G.V. DATUM
- PROPOSED ELEVATION, N.G.V. DATUM
- EXISTING PAVEMENT
- PROPOSED PAVEMENT
- DIRECTION OF OVERLAND FLOW
- CATCH BASIN (C.B.) AND PIPE
- DRAINAGE EASEMENT (D.E.)

NO.	DATE	DESCRIPTION	DES.	DWN.

STREET & STORM WATER
DRAINAGE PLAN
GOLF HAMMOCK UNIT 2
HIGHLANDS COUNTY, FLORIDA
FOR: AMERICAN HOME SERVICE CORP.

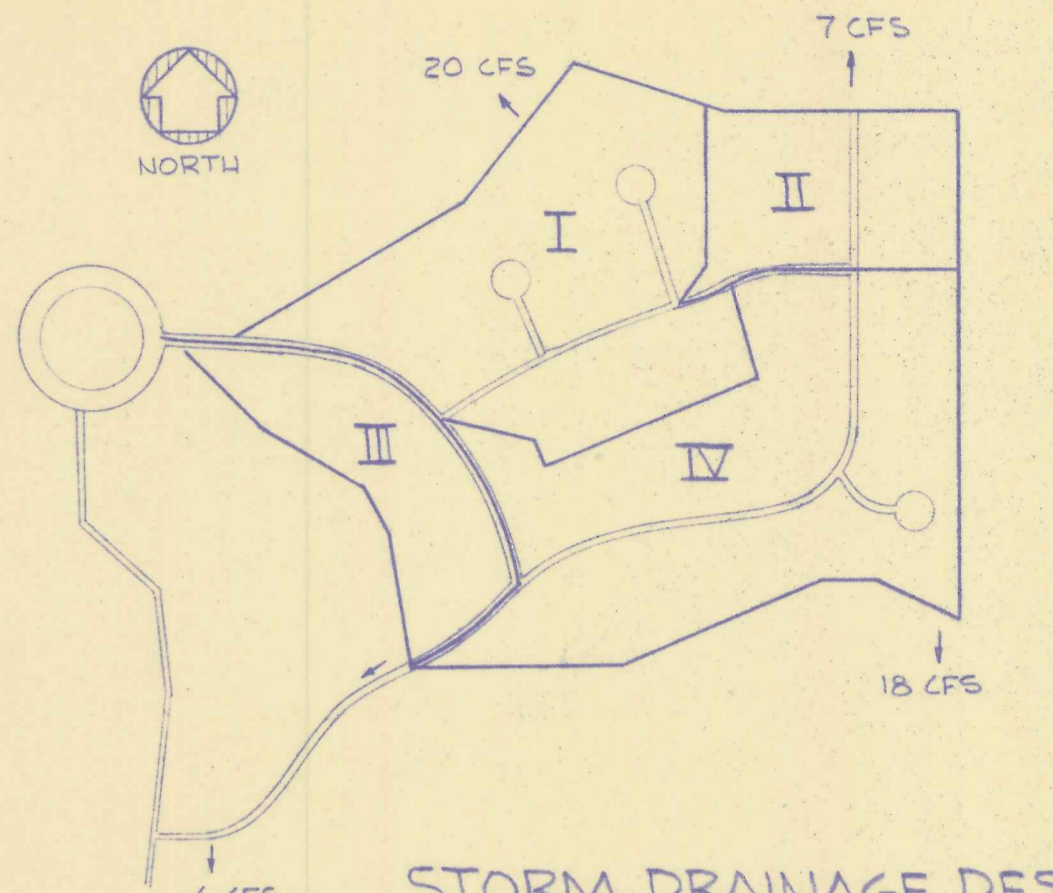
DES.	RHM	DWN.	WKM
APP.	RHM		
DATE	Dec. 16, 1977		
PROJECT NO.	0772-77		
DRAWING NO.	PD-3		
SHEET	3 OF 4		

ROBERT H. MILLER & ASSOCIATES
CONSULTING CIVIL ENGINEERS
4431 S.W. 44th AVE., FT. LAUDERDALE, FLA. 33314
APPROVED: *Robert H. Miller*
FLA. REGISTRATION NO. 10408



STREET PROFILES

SCALES:
 HORIZ. - 1" = 100'
 VERT. - 1" = 20'



STORM DRAINAGE DESIGN - 5 YR. STORM -

Area	Pervious Area (C=.10)	Impervious Area (C=.80)	Time of Conc.	Intensity	Cumulative Discharge (CFS)
I	20.1	2.7	22	4.6	20.
II	7.9	0.9	25	4.3	7
III	6.8	1.4	43	3.2	6
IV	25.4	3.3	43	3.2	18

- CAPACITIES:**
- Roadway swale flow capacity - 0.67' depth, 11' top width, n=.030, mean slope = .002, capacity = 3.9 cfs and velocity = 1.1 fps.
 - Minimum size drainage ditch - 12" depth, 15' top width, n=.030, mean slope = .001, capacity = 7.4 cfs and velocity = 1.0 fps.
 - Maximum size drainage ditch - 30" depth, 15' top width, n=.030, mean slope = .001, capacity = 34.8 cfs, and velocity = 1.9 fps.

- CONCLUSIONS:**
- Flow through roadway swales varies to maximum 3.0 cfs, well below their 3.9 cfs capacity.
 - Flow through on-site drainage ditches varies to maximum 10.0 cfs.
 - Flow through off-site drainage ditches varies to maximum 20 cfs, well below their 34.8 cfs capacity.
 - Existing lakes in the subdivision have adequate capacity for these additional flows.

- REFERENCES:**
- DOT Drainage Design Manual
 - Data Book for Civil Engineers - Design, Seelye
 - Sewerage and Sewage Treatment, Babbitt and Baumann
 - Highway Engineering, Ritter and Paquette
 - Standard Handbook for Civil Engineers, Merritt
 - Highlands County Subdivision Regulation, Ordinance No. 73-3
 - Fla. DOT Drainage Manual

SPECIFICATIONS

- GENERAL**
- All elevations existing and proposed are based on National Geodetic Vertical Datum.
 - The existing grade elevations are shown on the plans as contour intervals.
 - This subdivision shall not receive storm drainage runoff from any other areas in the future.
 - Proposed structures do not conflict with existing utilities.
 - Utility poles shall not be less than six (6) feet from the edge of any road pavement.
- PAVING**
- All materials, workmanship and inspections shall conform to the current Highlands County Specifications.
 - Roadway locations shall be cleared of all vegetation prior to placement of the subgrade. All tree stumps, muck, gumbo and other plastic clays shall be removed to a depth of 12" below the subgrade and horizontally to the ditch slope.
 - All underground utilities shall be installed prior to placement of the road subgrade.
 - Fill sections shall be constructed in 12" maximum lifts to provide 90% density. (Fla. Bearing Value)
 - All base material shall be suitable to the County Engineer.
 - Prime coat shall consist of .15 gallon (RC-1) per square yard covered with .15 cubic feet of clean sand per square yard and shall be traffic rolled.
 - All materials used for roadway construction shall meet Florida Dept. of Transportation current specifications.
 - The Contractor shall notify the Engineer of Record prior to commencing work and also after completion for schedule of a final inspection.
- STORM DRAINAGE**
- Storm drainage pipe shall be galvanized steel corrugated metal fabricated per ASTM A 444 with an asphalt coating inside and outside not less than .05 in. thick. The pipe shall be 15" nominal diameter, 16 gauge wall thickness with 2-2/3 inch x 1/2 inch corrugations.
 - Pipe couplings shall be minimum 7" wide standard split bands of the same alloy as the pipe and may be one gauge lighter than the pipe. Polyurethane or other sealant shall be supplied and used with the couplings.
 - The catch basins shall be constructed and located as detailed on the plans. The reinforcing steel shall be grade 40. Poured concrete shall be minimum 3000 psi strength.
 - Backfill in areas of catch basins and pipe shall be clean suitable material and compacted in six inch layers to 90% density.

STREET PROFILES

GOLF HAMMOCK UNIT 2
 HIGHLANDS COUNTY, FLORIDA
 FOR: AMERICAN HOME SERVICE CORP.

ROBERT H. MILLER & ASSOCIATES
 CONSULTING CIVIL ENGINEERS
 4431 S.W. 8th AVE., FT. LAUDERDALE, FLA. 33314

APPROVED: *Robert H. Miller*
 FLA. REGISTRATION NO. 10408

DES. RHM	DWN. WKM
APP. RHM	
DATE	DEC. 16, 1977
PROJECT NO.	0772-77
DRAWING NO.	PD-4
SH.	4 OF 4

NO.	DATE	DESCRIPTION	DES.	DWN.